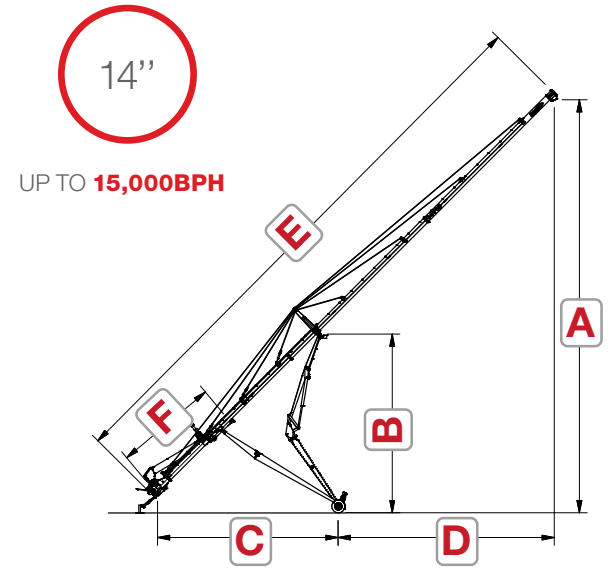


14" SWING AUGERS

14" SWING AUGERS



THE MERIDIAN 14" SWING AUGER IS RELIABLE, QUIET & MOVES UP TO 15,000BPH
 14-95 PICTURED WITH STANDARD SWING



Measurements reflect a hitch height of approximately 18" above ground level

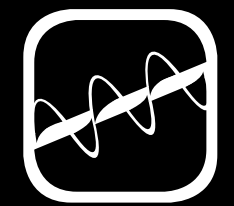
AUGER TUBE	14" OD x 11 gauge
AUGER FLIGHT	Cupped Super-Edge™ on 3" core
DRIVE	Tractor PTO 1000 rpm
LIFT	Dual 5 1/2" OD Cylinders, Lifting Pressure 2200 psi
SWING AUGER	Low Profile, PTO driven, steel cut sprockets, high speed roller chain

UNDERCARRIAGE	385/65R X 22.5 floatation tires
POWER REQUIRED	170 - 225 HP Tractor
CAPACITY PER HOUR	14,000 - 15,000 Bushels per hour
HOPPER SIZE	46" W x 74" L x 143/4" H
REDUCING GEARBOX	3 1/4 L of 8090 Gear Oil

		14-95	14-105	14-115	
		FIXED AXLE	FIXED AXLE	AXLES RETRACTED	AXLES EXTENDED
A	RAISED	69' 3" 21.1m	76' 4" 25.7m	83' 3" 25.4m	84' 2" 25.3m
	LOWERED	9' 4" 2.8m	10' 3" 3.1m	12' 1" 3.7m	13' 3" 4m
B	RAISED	36' 2" 11m	36' 2" 11m	36' 5" 11.1m	36' 9" 11.2m
	LOWERED	5' 3" 1.6m	5' 3" 1.6m	5' 11" 1.8m	6' 6" 2m
C	RAISED	37' 11.3m	37' 11.3m	37' 11.3m	37' 11.3m
	LOWERED	46' 14m	46' 14m	46' 5" 14.1m	46' 5" 14.1m
D	RAISED	29' 8" 9m	36' 9" 11.2m	42' 10" 13.1m	41' 11" 12.8m
	LOWERED	46' 7" 14.2m	56' 8" 17.3m	66' 2" 20.2m	66' 20.1m
E	TUBE LENGTH	95' 29m	105' 32m	115' 35.1m	115' 35.1m
F	SWING LENGTH	20' 5" 6.2m	20' 5" 6.2m	20' 5" 6.2m	20' 5" 6.2m
	WIDTH	13' 4m	13' 4m	14' 3" 4.3m	17' 5" 5.3m
	TRANSPORT LENGTH	96' 4" 29.4m	106' 5" 32.5m	116' 4" 35.5m	n/a
	AUGER WEIGHT	11,420lbs 5,180kg	11,714lbs 5,314kg	12,028lbs 5,456kg	
	AUGER HITCH WEIGHT	3,010lbs 1,365kg	2,585lbs 1,173kg	2,160lbs 980kg	

FEATURES

- Cable truss system - provides stability for heavy loads
- Each cable works on a three point system to eliminate tube sag between lock points
- Side cables located at main auger to reduce tube sway
- Hydraulic worm gear winch located at the hopper lift arm
- Heavy duty gearboxes
- High capacity 16" diameter mechanical drive swing auger
- Head-end features a heavy-duty dual thrust bearing
- Patented product overflow doors located at the discharge end of the auger - prevents auger plugging when the bin is full
- Electric mover on swing hopper
- 1000 rpm PTO speed with a speed reducing gearbox
- Powder coat finish



Move your grain quickly and efficiently with a Meridian 14" Swing Auger. This high capacity auger moves up to 15,000 bushels per hour with unmatched durability and is one of the quietest augers on the market. The 14" series feature lengths up to 115', Continuous Super-Edge™ Flighting, and robust gearboxes to ensure reliable, long-lasting performance.

The 14" auger is built with a super heavy-duty undercarriage and truss system. For ultimate convenience and capacity, add our new 16" Extendable Swing. For full details on the 16" Extendable Swing, see page 8.

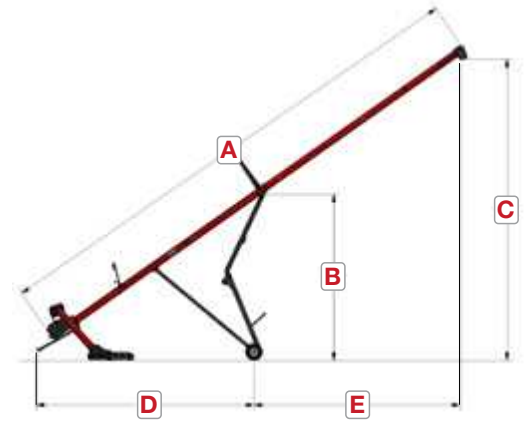
10" & 13" SWING AUGERS

10" & 13" SWING AUGERS



THE **10" & 13" SWING AUGERS** ARE THE PERFECT COMBINATION OF **INNOVATION, VALUE, & PERFORMANCE**

13-85 PICTURED WITH STANDARD SWING



13"

UP TO **13,000BPH**

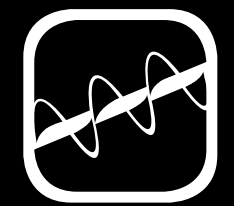
10"

UP TO **5,450BPH**

		1065	1075	1085	1375	1385	1395	13115
A	TUBE LENGTH	65'	75'	85'	75' 22.8M	85' 25.9M	95' 28.9M	115' 35M
B	RAISED	24'-9" 4.5m			24'7" 7.5m		33'-1" 10.1m	
	LOWERED	6'-9" 2.1m			6' 6" 2m		6'-4" 1.9m	
C	RAISED	39'-3" 11.9m	45' 13.7m	50'-9" 15.5m	44' 4" 13.5m	49' 7" 15.1m	59'-4" 18.1m	71'-7" 21.8m
	LOWERED	9'-4" 2.8m	10'-7" 3.2m	11'-10"	10' 1" 3.1m	11' 6" 3.5m	10'-5" 3.2m	14'-11" 4.5m
D	RAISED	30'-2" 9.2m			32'3" 9.8m		39'-5" 12m	
	LOWERED	38'-4" 11.7m			40' 12.2m		49'-11" 15.2m	
E	RAISED	23'-5" 7.1m	31'-7" 9.6m	39'-7" 12.1m	30' 6" 9.3m	39' 5" 12m	37' 11.2m	52'-10" 16.1m
	LOWERED	27'-2" 8.2m	37'-1" 11.3m	47'-0" 14.3m	36' 11m	45' 11" 14m	45'-8" 13.1m	65'-6" 20m

	1065	1075	1085	1375	1385	1395	13115
AUGER TUBE	10" OD x 13 Gauge			12.75" OD x 12 Gauge			
AUGER FLIGHT	9" OD x 3/16" c/w Continuous Super-Edge™			11 3/4" OD x 5/16" c/w Continuous Super-Edge™			
TUBE CONNECTORS	HD 2" x 2" x 3/16" Angle Flange			HD 2" x 2" x 1/4" Angle Flange			
UNDERCARRIAGE	A-Frame 6" x 2" x 3/16", Main Frame 3" x 3"			A-Frame 8" x 3" x 3/16", Main Frame 6" x 4" x 3/16"			
SPROCKET & CHAIN (540)	Hardened Tooth Sprockets & #60 Chain						
DRIVE	540 or 1000 rpm Tractor PTO						
WHEELS	15" 205/75R15			Tire ST235/80R16 c/w 6 Bolt on 5.5" BC			
POWER REQUIRED	100HP	110HP	120HP	100-125 HP Tractor		175-185 HP Tractor	
CAPACITY	Up to 5,450 Bushels/Hour Up to 2.5 Metric Tonnes/Minute			Up to 13,000BPH Up to 5.4 Metric Tonnes/Minute			
HOPPER DIMENSIONS	62" x 36" x 9-3/8" 157.5cm x 91cm x 24cm			62" x 41.5" x 13" 157.5cm x 105.4cm x 33cm			
TRANSPORT HEIGHT	12'-6" 3.8m	12'-6" 3.8m	13'-5" 4m	13'-1" 4m	14' 9" 4.5m	14'-2" 4.3m	15' 4.6m
TRANSPORT LENGTH	66'-7" 20.2m	76'-6" 23.3m	86'-5" 26.3m	77' 1" 23.5m	87' 2" 26.6m	97'-1" 29.6m	116'-10" 35.6m
TRANSPORT WIDTH	9'-9" 3m			12'-4" 3.8m		14'-10"	
AXLE EXTENSION WIDTH	12'-9" 3.9m			15'-4" 4.7m		18'-10"	

Measurements reflect a hitch height of approximately 18" above ground level



The Meridian 10" & 13" Swing Augers are the perfect combination of proven innovation, capacity, and affordability. The Meridian 10" & 13" Swing Auger series feature Continuous Super-Edge™ Flighting, HD undercarriages, robust gearboxes, patented Blow-Out doors, and more!

The 10" & 13" swing assembly can easily be placed on either side of the main auger tube. Simply push the arm from one side of the main auger tube to the other side to seamlessly operate the swing auger to best match your operation.

FEATURES:

- Heavy-duty cable truss system with side cables
- Hydraulic worm gear winch located at the hopper lift arm
- Heavy-duty gearboxes
- Head-end features a heavy-duty dual thrust bearing
- Patented product overflow doors located at the discharge end of the auger - prevents auger plugging when the bin is full
- Powder coat finish

OPTIONS:

- Available in 540 or 1000 PTO
- Hydraulic winch
- LED light package
- Kramble 12V remote controlled swing hopper mover
- 13" Poly Flex spout
- Transport safety lights