



Promotes Roots & Nodulation...Triggers Natural Defenses



ANALYSIS (0-27-6 WITH 3.8% Zn & 1.5% Mn + 10% Ca)

WHAT IS IT?

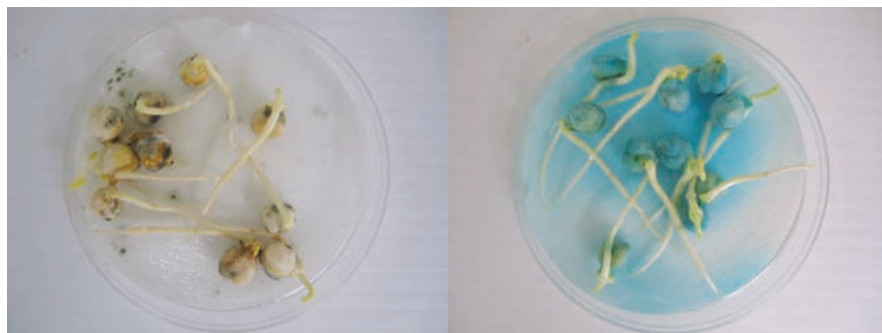
- Seed dressing for application onto pulse seed (peas, lentils, chickpeas,...).
- Unique formulation with high concentrations of Phosphorus, Potassium, Zinc and Manganese.
- Contains Calcium for root structure and nodulation.
- Rhizobia-friendly formulation.
- The Gel Rheology Technology™ keeps the highly concentrated product suspended and helps with seed adhesion and drying out.
- The product is sold in cases of 1 x 10 L of Pulse Primer® and 1 x 10 L of Primer Mn®.

WHEN & WHY USE IT?

- Cold and wet conditions and when seeding into a dry soil.
- High and Low pH soils, heavy manure land, soils with low organic matter.
- Sandy and light-textured soils.
- Heavy textured soil with high Mg content.
- Most importantly when farming a land with challenging soil-borne/seed-borne diseases thriving under wet conditions.

WHAT TO EXPECT?

- Pulse Pak® enhances secondary root development which maximizes the uptake of all nutrients.
- Pulse Pak® triggers the crop's natural defenses (i.e. Phytoalexins), which in conjunction with the fungicide seed treatment:
 - improves the control of soil- and seed-borne disease;
 - prevents root rots and damping-off;
 - improves crop emergence and establishment;
 - and helps preserve yield.



UTC chickpeas versus treated with a combination of fungicide seed treatment and Pulse Pak®.

Application Guidelines

- 3 mL/Kg of seed or 122 bu per 10 L jug; 410 L per 5000 bushel bin.
- Pulse Pak® can be used alone or in combination with other seed treatments. Check the best option for your targeted combinations.
- Pulse Pak® can be diluted with water for a more uniform coverage onto the seed. Dilution improves the dry down time.
- Pulse Pak® should NOT be used with liquid Rhizobia inoculant on the seed.
- When using Pulse Pak®, it is highly recommended to use dry granular inoculant.
- It is highly recommended to wash the seed treatment equipment with water after use.

*Pulse Pak® is a trademark of OMEX Agriculture Inc.



866-860-9660 / omexcanada.com

290 Agri Park Road, Oak Bluff, MB R4G 0A5